



ORICO 6629系列
双盘位2.5/3.5寸SATA硬盘底座通用

ORICO Dual Bay Hard Drive Dock

使用说明书 User's Manual



官方网站



Website

发行版本：ORICO 6629 Series-MUG-R2

执行标准：GB 4943.1-2011

制 造 商：深圳市元创时代科技有限公司

Manufactured by ORICO Technologies Co., Ltd

电话 /Tel: 86-755-25196059

邮箱 /E-mail: supports@orico.com.cn

官方网站: <http://www.orico.com.cn>

Official Website: <http://www.orico.cc>

公司地址：深圳市龙岗区布吉街道甘李工业园甘李六路
12 号中海信创新产业城 14A 栋 903-904

Company Add : 903-904, 14A, Zhonghaixin Innovation
Industrial Park, 6th Gan Lee Road, Buji,
Longgang District, Shenzhen , China

工厂地址：东莞市常平镇塘角路 24 号元创动力 (ORICO)
互联网产业园

Factory Add : ORICO Internet Oriented Industrial Park,
No.24 Tangjiao Rd, Changping County,
Dongguan

前言：

感谢您选择购买并使用本产品，为了您能够更好的使用本产品的所有功能，请您在正式使用本产品前仔细阅读本手册中所提及的在产品使用过程中应注意的事项以及详细功能操作说明。

未经深圳市元创时代科技有限公司明确书面许可，任何单位或个人不得擅自仿制、复制、誊抄或转译本书部分或全部内容。不得以任何形式或任何方式（电子、机械、影印或其他可能的方式）进行商品传播或用于任何商业、赢利目的。

ORICO® 为深圳市元创时代科技有限公司注册商标。本文档提及的其他所有商标或注册商标，均属其合法注册之公司所有。

本手册所提到的产品规格和资讯仅供参考，如有内容更新，恕不另行通知。除非有特殊约定，本手册仅作为使用指导，本手册中的所有陈述、信息等均不构成任何形式的担保。

! 声明事项：

1. 本说明书在编写过程中已力求内容正确与完整，但仍然可能发生文字错误与技术描述疏漏的情形，恳请消费者及业界不吝赐教指正，以利于本手册之修正工作，力求手册内容之正确性。
2. 深圳市元创时代科技有限公司只对产品本身存在的问题负有保修和维修责任，对于软件误操作、产品维修或者其他意外情况等所引起的数据资料删改或丢失，不负任何责任，也不对因此造成其它间接损失负责。鉴于数据资料的价值不可计量，重要资料请您自行备份。
3. 产品请以实物为准，规格变更恕不另行通知。购买产品时，请检查您的包装是否完整，如果您发现配件有损坏或者短缺的情况，请及时和原购买经销商联系以获得援助。

注意事项：

- 1、硬盘是精密设备，请预先阅读其使用说明书并正确操作。
- 2、ORICO移动硬盘盒是电子产品，请勿自行拆卸、维修。
- 3、请避免强烈摔打、碰撞或在高温、低温、潮湿、多尘及长期暴露于阳光下使用。
- 4、如果您使用的新买的硬盘，则需要在硬盘初始化后才可以正常使用，可参考说明书分区与格式化教程。

产品清单：

请您确认您的ORICO 2.5/3.5寸 SATA 硬盘底座的包装内容是否齐全。如果有任何一项未在包装内或损坏，请及时联系您的原购买经销商以获得援助。

产品本体.....	1PCS
电源适配器.....	1PCS
USB数据线.....	1PCS
使用说明书.....	1PCS
感谢卡	1PCS

因产品生产批次不同，会导致产品包装、外观或者一些附件可能会有更改，使您购买的产品有可能与此说明书提供的图片、外观、附件说明不完全一致，请您以收到的产品实物中标示的包装列表和实物为准，若由此给您带来不便请多多谅解，谢谢！

硬盘克隆:

除了可以同时运行两个串口硬盘以外，更让人兴奋的是此款还多增加了一个硬盘脱机对拷功能，也就是通常我们所说的硬盘克隆。

可以在不连接计算机的情况下，将源盘的资料备份到目标盘里面，您可以将克隆开关调至“CLONE”，通过“START”开关可以开始将您的硬盘克隆。

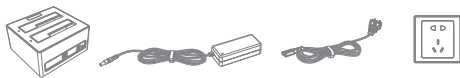
注意：XP系统不识别2TB以上的硬盘，如您的硬盘大于2TB，请把系统升级到WIN7及以上才能识别。硬盘分区格式目前有MBR和GPT两种格式，MBR最大支持2TB，最多支持4个主分区。GPT最大支持256TB，最多支持7个主分区，请根据您的需求选择您的硬盘分区格式。

设备移除說明:

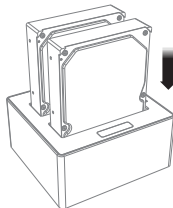
注意：当需要退出移动设备时，请先停止移动设备的数据读写，否则无法正常退出移动设备，强行退出有可能会您的数据异常或丢失。

脱机克隆操作步骤：

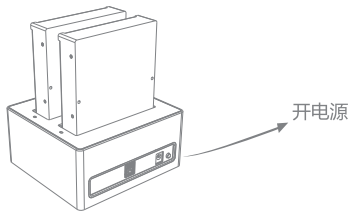
1.接入电源



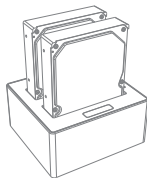
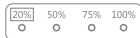
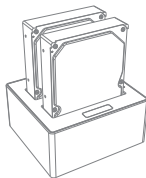
2.接入磁盘，Source位置磁盘为源盘，表示存在原始资料的磁盘，Target位置的磁盘为目标盘，表示资料将要写入的磁盘。



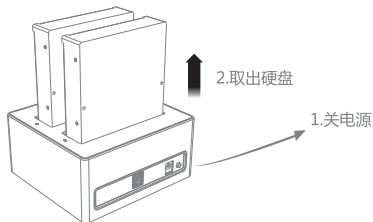
3.一切准备就绪，按下电源开关键，此时机器开机自检，并伴有两声鸣响，将克隆开关调至“CLONE”，然后按下“START”，此时机器发出一声鸣响，表示开始克隆。



4.克隆过程中进度指示灯会指示25%，50%，75% 和 100% 克隆进度。克隆完成后，面板上的拷贝进度灯全部亮起，不闪烁，即已经拷贝完成。



5.完成后，关闭电源开关，取出硬盘使用，就可以使用硬盘了。



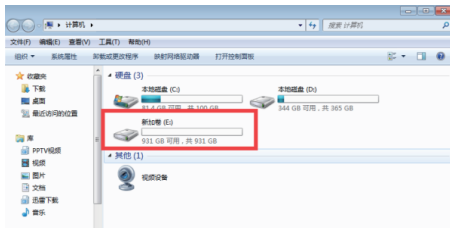
注意：

- 1.目标盘内如果有资料请先备份，克隆会先清空目标盘内所有资料。
- 2.目标磁盘的容量必须大于或者等于原始磁盘容量，否则将不能拷贝。
- 3.克隆不需要接入USB数据线。
- 4.克隆时请不要移动磁盘，不要断开电源。

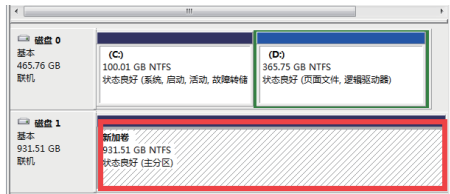
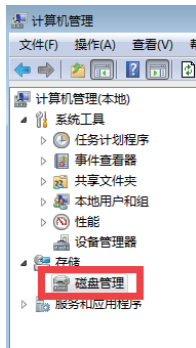
分区与格式化：

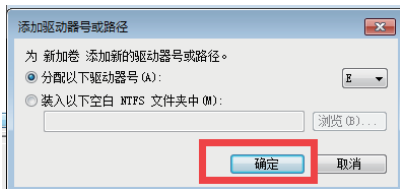
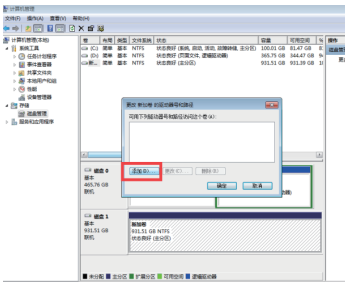
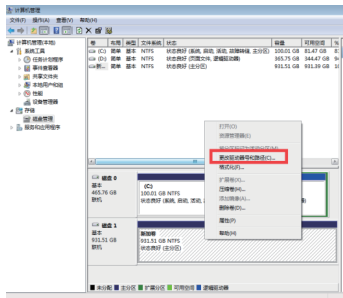
温馨提示：如果您的硬盘是新买的，则需要进行硬盘分区、格式化才可使用

1：如果您的硬盘已经进行过分区、格式化，您可以直接插入设备使用。并且将会在我的电脑磁盘中显示新加卷，如下图所示：



2：如果您的硬盘已经分区、格式化，但并没有显示新的磁盘，请先检查硬盘是否安装到位，电源是否打开，外部条件都符合后，请进行以下操作：右键单击桌面计算机，选择“管理”，进入计算机管理后选择“磁盘管理”，观察是否有多出新的磁盘，未分盘符，右键点击未分盘符的磁盘，选择“更改驱动器号和路径”，然后选择“添加”，点击确定即可。如下图所示：





3:如若您的硬盘没有进行分区、格式化操作，在操作系统能够正确识别到移动

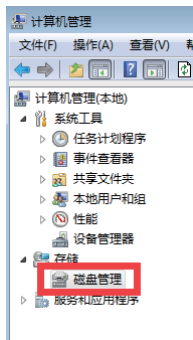
硬盘的前提下，您可以使用系统自带的

分区和格式化程序对硬盘进行相应操作，亦可以采用第三方软件（如Fdisk、

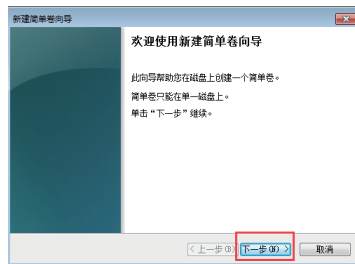
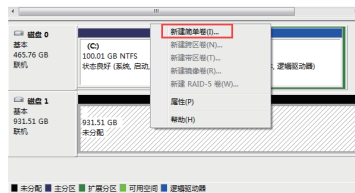
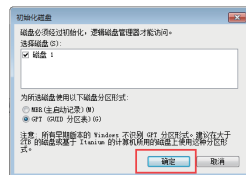
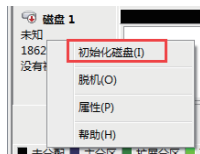
DM、PQMagic等）对硬盘进行分区和格式化操作。

以下以Win7系统自带分区和格式化

1.右键单击桌面计算机，选择“管理”，进入计算机管理后选择“磁盘管理”。

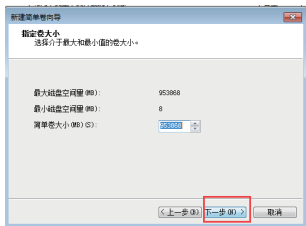


2.在磁盘名称区域右击，选择“初始化磁盘”，然后在右边磁盘区域右击，选择“新建简单卷”，点击“下一步”。

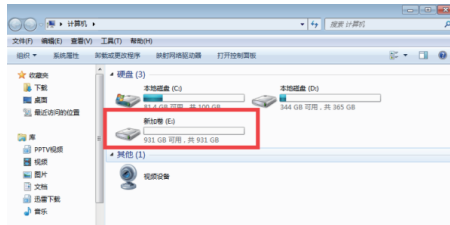
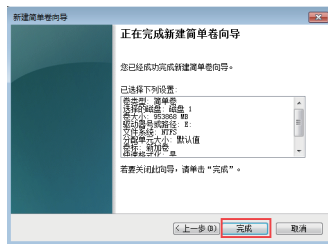
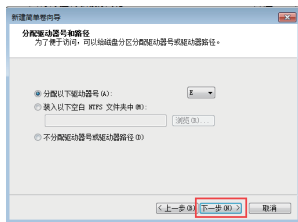


3.此时出现磁盘分区大小,根据您的需求,您可以选择将磁盘分为一个区或者多个区,
简单卷大小=当前分区的容量,1G=1024MB,若只需一个分区,数值调到最大即可

(默认数值是最大),然后点击“下一步”。



后面不需要更改,直接点击“下一步”,然后点击“完成”。



此时磁盘就出现在您的电脑中,正常使用即可。
(若需分多个区,重复以上步骤即可)

版权说明

感谢您购买并使用 ORICO 的产品，请在使用该产品之前认真阅读本说明书，以确保正确的操作方法，强烈建议您开始使用该产品前，为了确保您的资料数据安全，我们强烈建议您做数据备份，ORICO 作为设备产品制造商对于任何因素造成资料及数据丢失不承担任何直接或间接责任，制造商并不承担任何赔偿和数据恢复的义务。

同时，深圳市元创时代科技有限公司不对用户及经销商作特殊承诺，不对意外数据丢失、直接或间接损失负责！如您开始使用该产品，即表示您理解并接受！

版权说明：ORICO 相关产品以及资料均属于深圳市元创时代科技有限公司所有，拥有其相关制作权及版权，不得翻印。

本用户手册包括但不限于其所包含的所有信息受到著作权保护，未经元创时代科技有限公司许可，不得任意地仿制、拷贝、摘抄、转译或其他使用或处理；

本用户手册没有任何形式的担保、立场表明或其它暗示。若有任何因本用户手册或其所提到之产品的所有信息，所引起直接或间接的数据流失、利益损失或事业终止，元创时代科技及其所属员工恕不为其担负任何责任。除此之外，本用户手册所提到的产品规格及信息仅供参考，内容亦会随时更新，恕不另行通知，元创时代科技不负责本用户手册的任何错误或缺失。

本用户手册中所提及的产品名称只能做为识别之用，而前述名称可能是属于其他公司的注册商标或是制作权。当下列两种情况发生时，本产品将不再受到元创时代科技之保修及服务：

- (1) 该产品未经深圳市元创时代科技授权之维修、规格更改、零件替换；
- (2) 产品序列号模糊不清或丧失；

产品规格或驱动程序改变，用户手册都会随之更新，更新的详细说明请您访问元创时代官网：

<http://www.orico.com.cn>

Declaration

Thank you so much for Purchase ORICO Product. Please refer to this Manual when using ORICO® Product or Experienced Issues. Additionally, Please kindly Contact ORICO CustomerCare Team if any Concern.

All Rights of This Product, Manual and Trademark are Reserved by ORICO Technologies Co., Ltd, Please DO NOT Copy or Re-Publish without the Authorization of ORICO Technologies Co., Ltd. The Specification, Introduction of this Manual is for Reference ONLY. Please kindly Contact ORICO Customer Care Team is any Further Concern.



Note

1. Please Accroding to This Manual when using this Product.
2. Illustrations, Pictures etc in this Manual is for Reference ONLY. Please Adhere to the Original Products.
3. Please CAUTIONS when using this Product and Contact ORICO Customer Care Team for Support if any Help Needed. Any Improper Operation may Cause Failure, Lost or Damage to your Computer, Drives, Files etc. ORICO Technologies Co., Ltd will not Liabile for Compensation or Maintenance of Drives, Files and Devices which is not Manufactured by ORICO.
4. Please DO NOT disassemble This Product. ORICO Technologies Co., Ltd will not Liabile for Compensation or Maintenance about Improper Operation not in Accordance with Manual and Unauthorized Disassembly.

5. Please DO NOT Cut, Puncture or Crush This Product.
6. Please Keep This Product from Fire, HEAT, Water, Damp, Oil and Corrosive
7. Warranty will be invalid under following situation.
 - A. Out of Warranty Period
 - B. Unauthorized Disassembly
 - C. Improper Operation not in Accordance with Manual
 - D. Barcode or other Identity of Product missing or altered
 - E. Natural Disaster such as Fire, Earthquake etc.
 - F. Failure Caused by Accessories which is not Manufactured by ORICO.
 - G. No Proof of Purchase.

What's in the Box

Please check if the Following Product and Accessories are in the Box before using it and Contact your Retailer when any Missing or Broken Parts.

- 1x ORICO Dual Bay Hard Drive Duplicator Dock
- 1x USB3.0 Cable
- 1x Power Adapter
- 1x User Manual
- 1x Thanks Card

Warm Prompt

The Product, Accessories and Package may be Optimized for Better Application or Performance. We Sincerely sorry that they may not Exactly Match with what showing in Manual and Appreciate your Understanding. Please Adhere to the Original Products and Contact ORICO Customer Care Team if any Further Concern. Thank you very much.

Duplicate your Drive

1. Please ensure the Volume of Target Hard Drive in Slot "Target" is larger than Source Hard Drive in Slot "Source" when duplicating your Drive. Drives with same Model Number may have Tiny Difference in Volume and that may cause the Failure of duplicating.
2. Please backup Files in Target Hard Drive before duplicating. All files of Target Hard Drive will be overwritten when duplicating.
3. Turn off ORICO Dock, Disconnect USB Cable, Plug Source Hard Drive to Slot "Source" and Target Hard Drive to Slot "Target", Turn the Control Switch on Rear Panel From "PC" to "Clone", Then Turn ON ORICO Dock and Click the "Start" Button on Rear Panel will start the Duplicating.
4. The Duplicating is "Disk to Disk" but not "File to File". Duplicate an empty 1TB Hard Drive will take the same time of duplicate a Full-Filled 1TB Hard Drive.
5. The Speed of Duplicating is 60-80MB/S, 2 Hours will

needed to Duplicate a 500GB Drive,4 Hours will needed to Duplicate a 1TB Drive,8 to 9 Hours will needed to Duplicate a 2TB Drive.

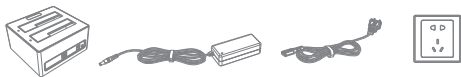
6. LED will Flicker when Duplicating and the Progress Bar will let you know how many files been Duplicated.

7. Drives will under Suspend Mode for Energy Saving when the Duplicating is Finished. Trun Off the Dock, Turn the Control Switch on Rear Panel From "Clone" to "PC" , Turn ON the Dock and attach it to Computer can help you check the Duplicated Drives.

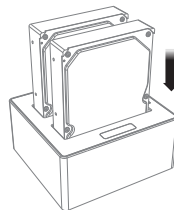
8. The Duplicating need lots of Time and you may not noticed if the Duplicating Finished or Not.However you can judge by the Status of the Dock and Drives – If the Dock and Drives areunder Suspend Mode, The Duplicating is Definitely Finished.

How to Start

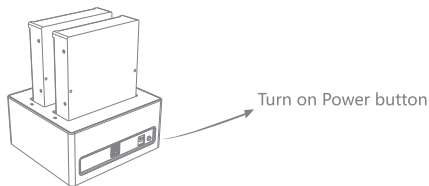
1. Attach This Dock to Outlet, Power Strip or Surge Protector with the Power Adapter and Power Cord in the Box.



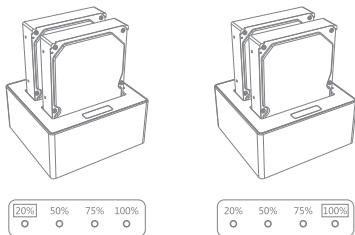
2.Insert your Drive.



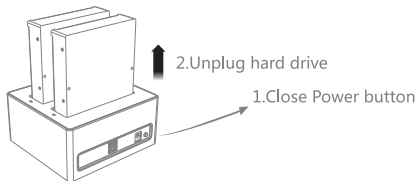
3.If you wanna manage your Drives and Files on Computer, Switch Control Switches on Rear Panel to "PC" and Turn it ON,Then Attach the Dock to Computer through the USB3.0 Cable in the Box.



4.If you wanna Duplicate your Drive, Switch Control Switches on Rear Panel to "Clone" and Turn it ON, Then Click Start Button will start the Duplicating. The 25%, 50%, 75% and 100% Progress Bar Indicator will let you know how many have been Duplicated.



5.Turn the Dock OFF and Eject your Drive when you finished using this Product.

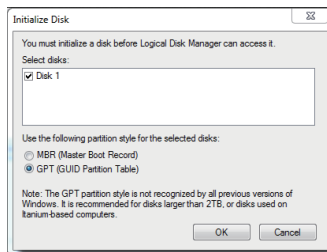


Initialize and Format New Drives under Microsoft

Windows

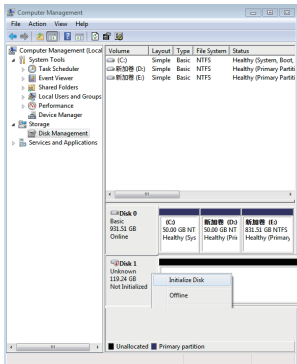
New Drive or RAID need to be Initialized and Formatted or it won't work for us. Please follow the following Direction to Initialize and Format your Drive Under Microsoft Windows if you are using a New Drive or Setted a New RAID.

1. Please ensure you have mounted Drive to ORICO Enclosure and Attach the Enclosure with Drive to Computer Properly. Then Right click on computer,Select "Manage" , Open "Disk Management" in "Storage" of opened windows. A Popup will Come Up Here Suggests a New Drive need to be Initialized. Please Select the Disks and Click OK will get it Initialized.

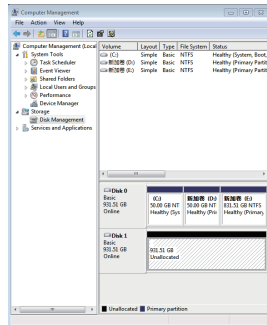


Note

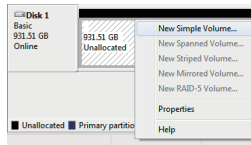
- A. If you are Mounting a Drive which not Larger than 2TB and May using on a Windows Vista or Earlier Computer, Initialize with Partition Style MBR is Recommended.
- B. If you are Mounting a Drive which Larger than 2TB, Please Initialize with Partition Style GPT. Or you will get 2TB of the Drive Applicable and the Rest will be unable to Use.
- C. If you Closed this Windows by Mistake or the Windows have never come up, Right Click on the "Disk Number" and Select "Initialize Disk" will get the Windows come up.



- 2. Any HDD or SSD attached to this Computer will show in "Disk Management" we opened in Step 1. The Unallocated Drive is your New Drive which need to be Formatted.



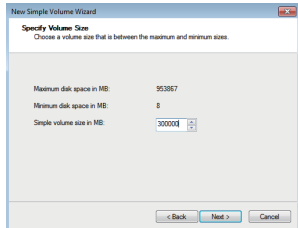
- 3. Right Click on Unallocated New Drive, Select "New Simple Volume" will start to Add New Volume and Format it.



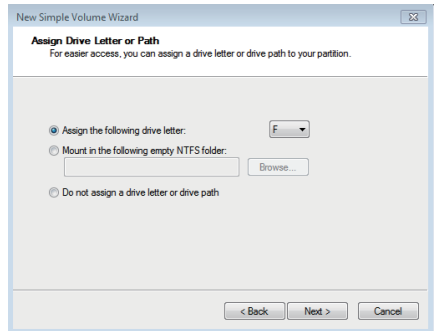
4. Click "Next" .



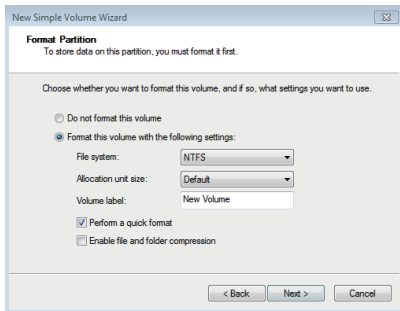
5. Set the Volume Size of your New Volume. You can Customize the Size. Or You can Set the Size of the Volume at Maximum Disk Space to Set the Drive to One Volume.



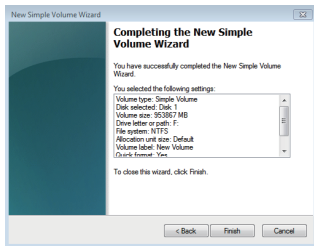
6. Assign New Drive Letter for the New Volume. Drive Letter such as C,D,E,F,G will shown in Computer and Explorer for Application.



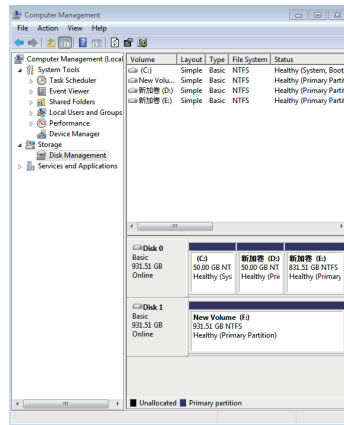
7. Format your New Volume. You can set the File System (NTFS or FAT32), Allocation Unit Size and Volume Label Here. Perform a Quick Format is Recommended. Please click "Next" when Everything is Configured.



8. Click "Finish" will Start to Format the Volume.



9. The Formatting will take 5 to 30 Seconds. When the Formatting is Done, The New Volume will be Ready for Application.

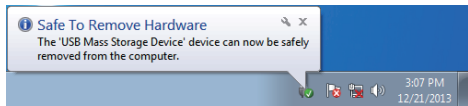
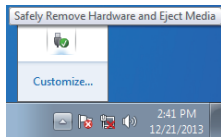


10. If you have not Set the Size of the Volume at the Maximum Disk Space. The Rest Space of the Drive will be Unallocated and you can Repeat Step 3 to 9 to get them Created and Formatted.

Remove Devices

1. Remove Under Microsoft Windows:

Stop the Using the Devices and click "Safely Remove Hardware and Eject Media" icon on taskbar, Select "Eject the USB device" to remove the devices safely when the system suggests "Safe To Remove hardware".



2. Remove from Mac OS: Stop the reading/writing to the devices and drag it in to Trash.

Note. Please follow the Direction of User' s Manual and DO NOT Force Remove Devices while Application. Force Remove may cause Error or Damage to the Files or Devices.

Trouble Shotting

Please try the following Steps if Drives can' t been Mounted Properly.

- A. Please check if USB Hosts of Computer are working Properly. Attach ORICO Device and Drive to Rear USB Hosts is Recommended if you are using a Desktop Computer.
- B. Mount ONE Drive for Test is Recommended. Please check if the ORICO Device will works well when ONE Drive Mounted to HDD Slot 1.
- C. Please ensure the Cable and Power Adapter attached properly.
- D. Please check if the LED of ORICO Device will on or not when Drive Mounted and Powered On.
- E. Please ensure the Drive have been Formated Properly. Right click on computer, Select "Manage" , Open "Disk Management" in "Storage" of opened windows will shows any Drive mounted to your Computer and if they are Formated or Not. Please follow the Direction of "Initialize and Format New Drives under Microsoft Windows" if you are mounting New Drives.
- F. Please Test the ORICO Device and Drive works well with other USB3.0 or 2.0 Hosts or another Computer if available.
- G. Please Test the ORICO Device and Drive works well with other USB3.0 Cable or USB2.0 Cable for Printer if available.
- H. Please Test the ORICO Item with another 12V Power Adapter if Available.

If any Issue Remains, Please Contact ORICO Customer Care Center and let us Know the Detailed info of your Drive and Computer with a Screen Shot of "Disk Management" & "Disk Drives" under "Device Manager" .
ORICO Customer Care Center will always be here to help.

ORICO Customer Care Center Website: <http://oricoonline.us>
ORICO Customer Care Team: Supports@orico.com.cn
Tel: 86-755-25196059

FCC and CE Radiation Norm

FCC

This equipment has tested and found to comply with the limits for Class B digital device pursuant to Part 15 of Federal Communications Commission (FCC) rules.

CE

This equipment has tested and found to comply with the limits of the European Council Directive on the approximation of law of the member states relating to electromagnetic compatibility(89/336/EEC) according to EN 55022 Class B.

FCC and CE Compliance Statement

These limits are designed to provide reasonable protection against frequency interference in residential installation. This equipment generates, uses and can radiate radio frequency energy, and if not installed or used in accordance with the instructions, may cause harmful interference to radio communication. However, there is no guarantee that interference will not occur in television reception, which can be determined by turning the equipment off and on. The user is encouraged to try and correct the interference by one or more of the following measures: Reorient or relocate the receiving antenna, increase the separation between the equipment and the receiver, Connect the receiver to a different power outlet, or unplug the receiver from the wall outlet. If the interference persists, consult the dealer or a qualified radio/television technician for further suggestions.

CAUTION!

The Federal Communication Commission warns the user that changes or modifications to the unit not expressly approved by the party responsible for compliance could void the user's authority to operate the equipment.

Disclaimer Statement

Thank you for your choice to purchase and use ORICO products! Please read this user manual carefully before using the product, to ensure correct operation method. We strongly recommend you to make data backup before using this product so as to make sure your data are completely safe. As the equipment manufacturer, ORICO do not afford any direct or indirect responsibility for documents and data loss caused by any factor. Manufacturers do not have the obligation to afford any compensation and data recovery. ORICO Technologies Co., Ltd do not make special promise to users and distributors. ORICO do not afford any unexpected data loss, direct or indirect loss. If you start to use this product, that means you understand and accept this disclaimer!

Copyright description: All ORICO products and relative data belong to ORICO Technologies CO., LTD. ORICO have the right of produce and copyright, reproduction is prohibited. This user manual includes, but not limited to all information with copyright protection, without permission from ORICO, no one is allowed to done, copy, excerpt, translation or use for other things.

This user manual does not have any form of warranty, position statement or other hint. If there is any direct or indirect data loss, economic loss or enterprise bankruptcy caused by this user manual or its product information mentioned, ORICO and its staff will not afford any responsibility for that. Besides, the product specification and information mentioned in this user manual are just for your reference, and contents will update at any time without further notice. ORICO will not take responsibility for any error or negligence in this user manual.

The product name mentioned in this user manual can be only used for identification, and this name may be part of the other company's registered trademark or production rights. When below two situations happened, this product will not have ORICO's warranty and service.

(1) The product does not belong to ORICO's authorization of warranty, specification alteration and parts replacement.
(2) Product bar code is vague or lost.
The user manual will update as the product specification or driver's change. Please visit the ORICO official website to get the details: www.orico.com.cn.